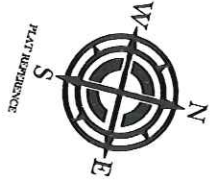


Page 1



LOCATION MAP NOT TO SCALE

Line #	Length	Direction
L1	100.00'	N 13° 00' 30" E
L2	91.07'	N 02° 17' 40" E
L3	60.44'	N 04° 37' 40" W
L4	100.00'	N 45° 50' 50" E
L5	133.50'	N 45° 50' 50" E
L6	152.50'	N 45° 50' 50" E
L7	135.47'	N 40° 14' 10" W
L8	118.50'	N 64° 00' 00" E
L9	51.44'	S 68° 57' 40" W
L10	78.27'	S 68° 57' 40" W
L11	56.50'	S 68° 57' 40" W
L12	92.27'	S 67° 37' 50" E
L13	128.50'	S 55° 51' 27" W
L14	63.53'	S 62° 50' 34" W
L15	24.44'	S 43° 42' 20" E
L16	33.61'	S 17° 03' 03" W
L17	178.40'	S 07° 04' 20" E
L18	151.53'	S 09° 50' 24" E
L19	73.25'	S 10° 27' 37" E
L20	102.00'	S 20° 40' 40" E
L21	68.50'	S 17° 50' 51" E
L22	52.27'	S 07° 20' 43" E
L23	36.67'	S 14° 22' 42" E
L24	61.64'	S 20° 32' 37" E
L25	65.54'	S 20° 22' 07" E
L26	61.61'	S 20° 21' 50" E
L27	64.13'	S 23° 30' 32" E
L28	30.07'	S 27° 00' 34" E
L29	43.31'	S 19° 21' 00" E
L30	42.40'	S 29° 40' 21" E

Line #	Length	Direction
L31	16.00'	S 41° 20' 30" E
L32	48.51'	S 46° 50' 20" E
L33	42.40'	S 47° 30' 50" E
L34	68.00'	S 34° 40' 30" E
L35	38.20'	S 29° 50' 00" E
L36	68.13'	S 23° 31' 50" E
L37	62.00'	S 19° 03' 31" E
L38	51.02'	S 30° 00' 31" E
L39	121.97'	S 38° 00' 30" E
L40	68.63'	S 45° 15' 07" E
L41	68.63'	S 45° 15' 07" E
L42	98.64'	S 46° 20' 31" E
L43	194.60'	S 46° 40' 55" W
L44	46.97'	S 60° 10' 00" W
L45	74.97'	N 60° 10' 00" W
L46	192.72'	S 60° 20' 35" W
L47	42.60'	S 55° 07' 57" W
L48	154.21'	S 69° 10' 03" W
L49	154.21'	S 69° 10' 03" W
L50	178.21'	S 70° 47' 54" W
L51	78.22'	S 70° 30' 20" W
L52	178.21'	S 70° 47' 54" W
L53	178.20'	S 70° 47' 54" W
L54	178.20'	S 70° 47' 54" W
L55	178.20'	S 70° 47' 54" W
L56	178.20'	S 70° 47' 54" W
L57	178.20'	S 70° 47' 54" W
L58	178.20'	S 70° 47' 54" W
L59	178.20'	S 70° 47' 54" W
L60	178.20'	S 70° 47' 54" W

Line #	Length	Direction
L61	86.00'	S 62° 16' 10" W
L62	34.67'	S 60° 00' 50" W
L63	42.40'	S 57° 50' 50" E
L64	78.27'	N 03° 01' 51" W
L65	78.27'	N 03° 01' 51" W
L66	100.00'	N 03° 01' 51" E
L67	100.00'	N 03° 01' 51" E
L68	99.50'	N 02° 20' 00" W
L69	99.50'	N 02° 20' 00" W
L70	100.00'	N 11° 24' 34" W
L71	100.00'	N 12° 50' 50" W
L72	91.20'	N 07° 34' 50" W
L73	50.45'	N 60° 27' 30" E
L74	100.00'	N 64° 17' 55" E
L75	20.45'	N 60° 20' 21" E
L76	20.45'	N 60° 20' 21" E
L77	20.45'	N 60° 20' 21" E
L78	20.45'	N 60° 20' 21" E
L79	20.45'	N 60° 20' 21" E
L80	20.45'	N 60° 20' 21" E
L81	110.00'	N 60° 20' 21" E
L82	110.00'	N 60° 20' 21" E
L83	62.12'	N 61° 46' 35" E
L84	126.64'	N 47° 43' 20" E
L85	68.64'	N 74° 11' 40" E
L86	62.00'	N 60° 59' 49" E
L87	68.64'	N 74° 11' 40" E
L88	35.30'	N 70° 47' 10" E
L89	118.50'	N 70° 47' 10" E
L90	120.00'	N 61° 02' 34" E

Line #	Length	Direction
L91	48.63'	N 41° 31' 00" E
L92	48.63'	N 31° 24' 50" E
L93	23.50'	N 31° 24' 50" E
L94	30.70'	N 29° 43' 22" E
L95	104.04'	N 33° 40' 00" E
L96	48.22'	N 29° 51' 20" E
L97	151.80'	N 29° 51' 20" E
L98	45.60'	N 34° 14' 07" E
L99	41.00'	N 40° 00' 24" E
L100	41.00'	N 40° 00' 24" E
L101	68.00'	N 47° 41' 50" E
L102	17.54'	N 12° 30' 43" W
L103	45.80'	N 30° 14' 03" E
L104	61.37'	N 34° 30' 55" E
L105	118.80'	N 02° 55' 31" W
L106	38.30'	N 27° 40' 50" E
L107	84.50'	N 04° 20' 37" E
L108	157.60'	N 01° 00' 00" W
L109	71.20'	N 21° 30' 55" W
L110	30.70'	N 10° 27' 50" W
L111	43.50'	N 60° 47' 43" W
L112	33.90'	N 60° 14' 14" W
L113	51.44'	S 60° 57' 40" W
L114	22.54'	N 12° 30' 43" W
L115	71.20'	S 60° 47' 43" W
L116	54.00'	N 00° 40' 30" W
L117	30.70'	N 70° 22' 47" E
L118	30.70'	S 29° 22' 47" W
L119	178.20'	S 74° 40' 52" W

Curve #	Radius	Arc Length	Delta Angle	Chord Direction	Chord Length
C1	50.00'	56.80'	63.18	N 41° 24' 30" E	53.80'
C2	50.00'	78.68'	67.80	S 62° 04' 44" E	69.37'
C3	50.00'	76.60'	67.80	S 20° 40' 02" W	69.37'
C4	50.00'	44.00'	49.20	N 60° 40' 12" W	41.69'

EXISTING EASEMENTS OF OTHER NATURE ARE SHOWN FOR INFORMATION ONLY. ALL LOT DIMENSIONS ARE BASED ON THE RECORDS OF THE PLAT OF THE HIGHLANDS SUBDIVISION, PLAT CABINET C, BLOCK 21, AS SHOWN HEREON.

THE HIGHLANDS SUBDIVISION

PLAT CABINET C
BLOCK 21

NOTES:

THIS PROJECT IS REFERENCED TO THE PROPERTY DESCRIBED IN THE RECORDS OF THE PLAT OF THE HIGHLANDS SUBDIVISION, PLAT CABINET C, BLOCK 21, AS SHOWN HEREON. THE PROJECT IS SUBJECT TO ALL RESTRICTIONS, COVENANTS, AND EASEMENTS APPLICABLE TO THE PROJECT.

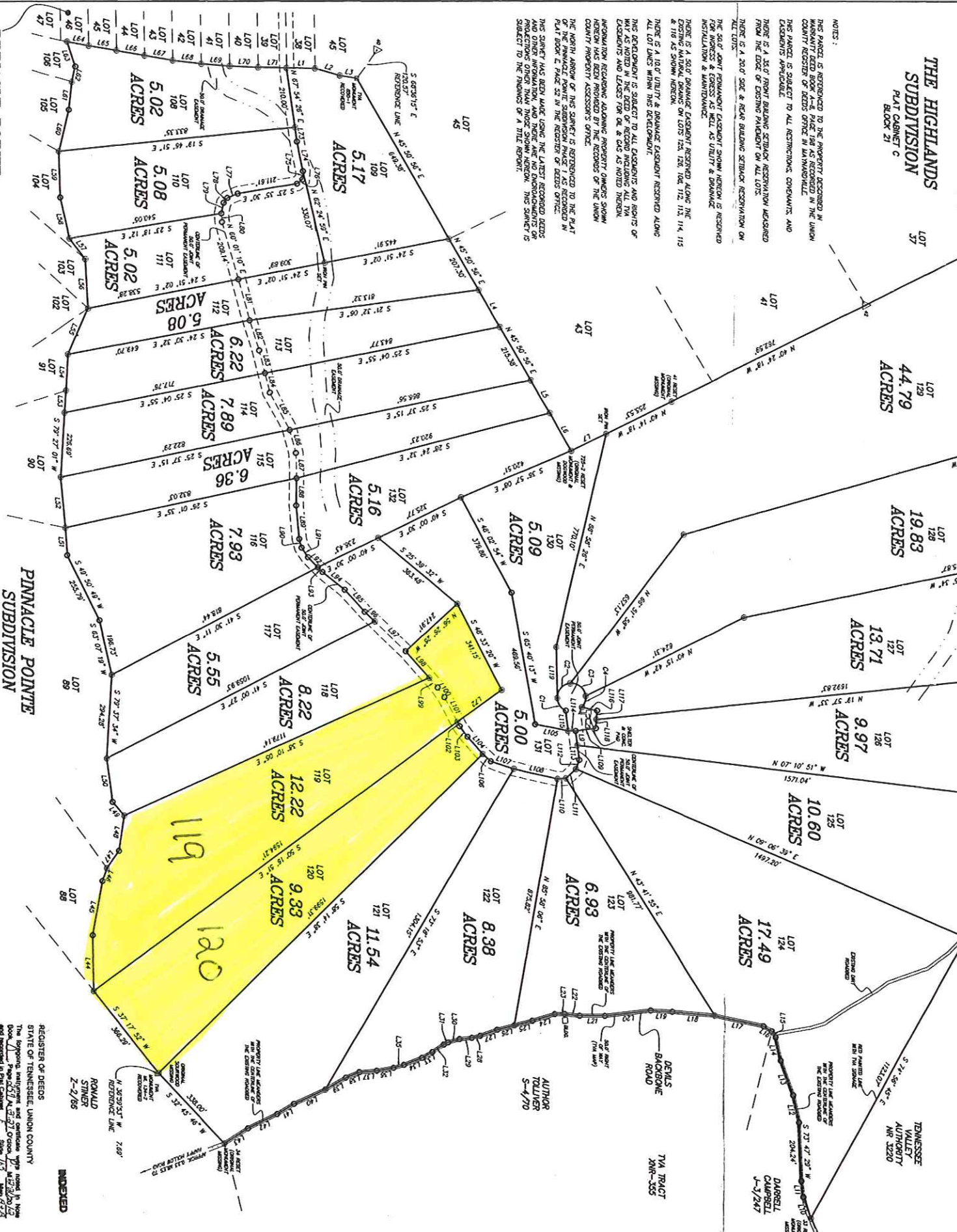
THERE IS A 20' FRONT BUILDING SETBACK RESTRICTION MEASURED FROM THE BACK OF EXISTING PINNACLE POINT LOTS.

THERE IS A 20' SIDE & REAR BUILDING SETBACK RESTRICTION ON THE LOTS.

THE SOLE AGENT PERMANENT EASEMENT SHOWN HEREON IS RESERVED FOR THE USE OF THE TENNESSEE VALLEY AUTHORITY.

THERE IS A 10' UTILITY & SERVICE EASEMENT RESERVED ALONG THE NORTH ABN OF THIS SUBJECT IS REFERENCED TO THE PLAT OF THE PINNACLE POINT SUBDIVISION PHASE I, AS RECORDED IN PLAT BOOK E PAGE 52 IN THE RECORDS OF DEEDS OFFICE.

THIS SUBJECT HAS BEEN MADE USING THE LATEST RECORDED DEEDS AND OTHER INFORMATION, AND THERE ARE NO ENCUMBRANCES OR SUBJECT TO THE FINANCING OF A TITLE REPORT.



LINE LEGEND

---	SUBJECT PROPERTY
---	ADJACENT PROPERTY
---	RECORDING LINE
---	PLAT BOUNDARY LINE
---	ADJ. PROPERTY
---	LINE OF PLAT

SYMBOL LEGEND

○	THE LOCATOR
△	THE POINT
○	RECORDED (AS NOTED)
○	ADJACENT PROPERTY
○	(AS SHOWN ON DEED)



99470416 SHARPS CHAPEL COMMUNITY UNION COUNTY

REGISTERED PROFESSIONAL SURVEYOR	100
REGISTERED PROFESSIONAL ENGINEER	100
REGISTERED PROFESSIONAL ARCHITECT	100
REGISTERED PROFESSIONAL LAND SURVEYOR	100
REGISTERED PROFESSIONAL CIVIL ENGINEER	100
REGISTERED PROFESSIONAL ELECTRICAL ENGINEER	100
REGISTERED PROFESSIONAL MECHANICAL ENGINEER	100
REGISTERED PROFESSIONAL CHEMICAL ENGINEER	100
REGISTERED PROFESSIONAL INDUSTRIAL ENGINEER	100
REGISTERED PROFESSIONAL AERONAUTICAL ENGINEER	100
REGISTERED PROFESSIONAL METEOROLOGICAL ENGINEER	100
REGISTERED PROFESSIONAL AGRICULTURAL ENGINEER	100
REGISTERED PROFESSIONAL MARINE ENGINEER	100
REGISTERED PROFESSIONAL MINING ENGINEER	100
REGISTERED PROFESSIONAL METALLURGICAL ENGINEER	100
REGISTERED PROFESSIONAL CHEMIST	100
REGISTERED PROFESSIONAL BIOLOGICAL ENGINEER	100
REGISTERED PROFESSIONAL ENVIRONMENTAL ENGINEER	100
REGISTERED PROFESSIONAL FOOD ENGINEER	100
REGISTERED PROFESSIONAL TEXTILE ENGINEER	100
REGISTERED PROFESSIONAL FIBER ENGINEER	100
REGISTERED PROFESSIONAL POLYMER ENGINEER	100
REGISTERED PROFESSIONAL PLASTIC ENGINEER	100
REGISTERED PROFESSIONAL RUBBER ENGINEER	100
REGISTERED PROFESSIONAL LEATHER ENGINEER	100
REGISTERED PROFESSIONAL PAPER ENGINEER	100
REGISTERED PROFESSIONAL GLASS ENGINEER	100
REGISTERED PROFESSIONAL CERAMIC ENGINEER	100
REGISTERED PROFESSIONAL METAL ENGINEER	100
REGISTERED PROFESSIONAL WOOD ENGINEER	100
REGISTERED PROFESSIONAL TEXTILE ENGINEER	100
REGISTERED PROFESSIONAL FIBER ENGINEER	100
REGISTERED PROFESSIONAL POLYMER ENGINEER	100
REGISTERED PROFESSIONAL PLASTIC ENGINEER	100
REGISTERED PROFESSIONAL RUBBER ENGINEER	100
REGISTERED PROFESSIONAL LEATHER ENGINEER	100
REGISTERED PROFESSIONAL PAPER ENGINEER	100
REGISTERED PROFESSIONAL GLASS ENGINEER	100
REGISTERED PROFESSIONAL CERAMIC ENGINEER	100
REGISTERED PROFESSIONAL METAL ENGINEER	100
REGISTERED PROFESSIONAL WOOD ENGINEER	100

REGISTER OF DEEDS
STATE OF TENNESSEE, UNION COUNTY

The foregoing plat and schedule were made by me, the undersigned, on this 12th day of October, 2007, at the City of Nashville, Tennessee.

Tony N. Crutchfield
Registered Professional Surveyor
No. 9810

1. I HEREBY CERTIFY THAT THIS IS A CORRECT AND TRUE COPY OF THE ORIGINAL SURVEY AND THAT THE SAID ORIGINAL SURVEY IS ON FILE IN THE REGISTER OF DEEDS OFFICE.

Tony N. Crutchfield
Registered Professional Surveyor
No. 9810

CRUTCHFIELD SURVEYS
JERRY W. CRUTCHFIELD, R.L.S. 1612
TONY N. CRUTCHFIELD, R.L.S. 1789
P.O. BOX 292
105 LIBERTY STREET
JACKSON, TENNESSEE 37757
(423) 566-1463 office
(423) 566-0382 fax
(423) 566-0265 home



REVISED SURVEY FOR STEVE JONES OF THE
PINNACLE POINTE
PHASE III
SHARPS CHAPEL COMMUNITY UNION COUNTY

WARRANTY DEED BOOK: A-8

PAGE: 108

TAX MAP: 007

PARCELS: 038.00 & 037.00

DISTRICT: 5

DATE: 9-18-12

REVISIONS: 12-5-12

SCALE: 1" = 200'

FILE NAME: PINNACLES3A